

Apartment B.7

2 Camere +

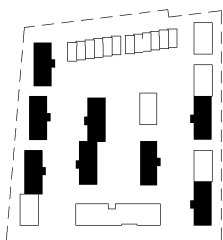
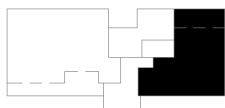
Etaj 2 / Imobil P + 3

S utila incalzita : **62.3 m²**

S terasa : **11.1 m²**

S construita locuinta : **80.6 m²**

S construita incluzand terasele : **96.5 m²**



| SUPRAFETE UTILE APARTAMENT B7 |

B.7.1	Hol Intrare	3.1 m ²
B.7.2	Living	19.7 m ²
B.7.3	Bucatarie + Dining	10.3 m ²
B.7.4	Birou	9 m ²
B.7.5	Dormitor	12.5 m ²
B.7.6	Baie	5.1 m ²
B.7.7	Depozitare	2.6 m ²
B.7.9	Terasa	11.1 m ²
B.7		73.3 m ²

