

Apartment B.6

3 Camere +

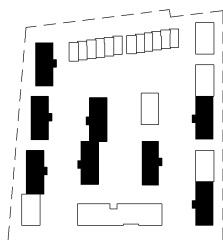
Etaj 2 / Imobil P + 3

S utila incalzita : 98.2 m²

S terasa : 20.9 m²

S construita locuinta : 126.7 m²

S construita incluzand terasele : 155.7 m²



| SUPRAFETE UTILE APARTAMENT B6 |

B.6.1	Hol Intrare	2.1 m ²
B.6.2	G.S	1.9 m ²
B.6.3	Living	20.7 m ²
B.6.4	Bucatarie + Dining	23 m ²
B.6.5	Hol	5.9 m ²
B.6.6	Birou	7.6 m ²
B.6.7	Dormitor	12.9 m ²
B.6.8	Dormitor	15.9 m ²
B.6.9	Baie	4 m ²
B.6.10	Baie	4.2 m ²
B.6.11	Terasa	20.9 m ²
B.6		119.1 m ²



Etaj 2