

## Apartment B.5

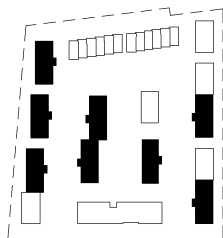
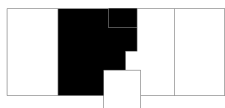
### 3 Camere

Etaj 1 / Imobil P + 3

S utila incalzita : **76.2 m<sup>2</sup>**

S construita locuinta : **93.4 m<sup>2</sup>**

S construita incluzand terasele : **102.8 m<sup>2</sup>**



#### | SUPRAFETE UTILE APARTAMENT B5 |

B.5.1	Hol Intrare	3.1 m <sup>2</sup>
B.5.2	G.S	1.9 m <sup>2</sup>
B.5.3	Living	21.3 m <sup>2</sup>
B.5.4	Bucatarie + Dining	18.7 m <sup>2</sup>
B.5.5	Dormitor	13.4 m <sup>2</sup>
B.5.6	Birou	10.2 m <sup>2</sup>
B.5.7	Baie	4.4 m <sup>2</sup>
B.5.8	Hol	3.2 m <sup>2</sup>
B.5.9	Terasa	7.2 m <sup>2</sup>
B.5		83.3 m <sup>2</sup>

