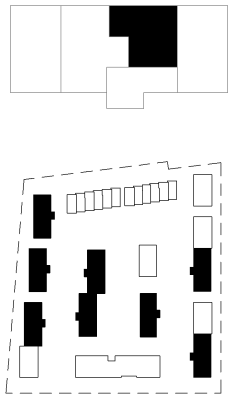


Apartment B.3

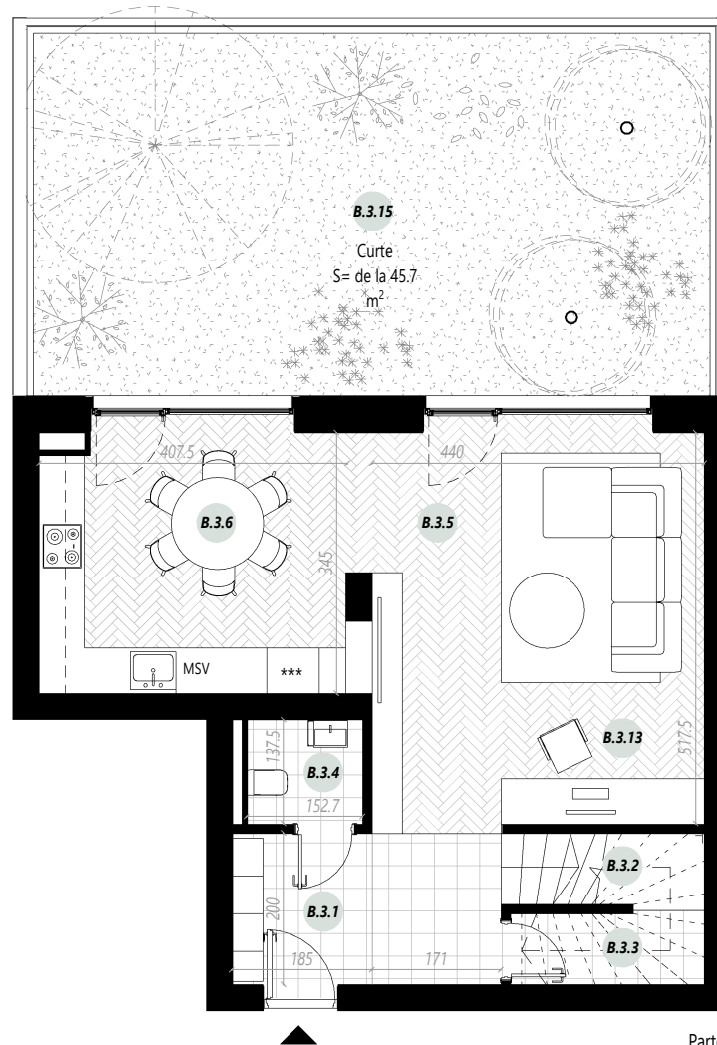
3 Camere Duplex +
Parter + 1 (duplex) / Imobil P + 3

S utila incalzita : 93.1 m²
S construita locuinta : 122.7 m²
S curte privata : de la 45.7 m² la 59.7 m²

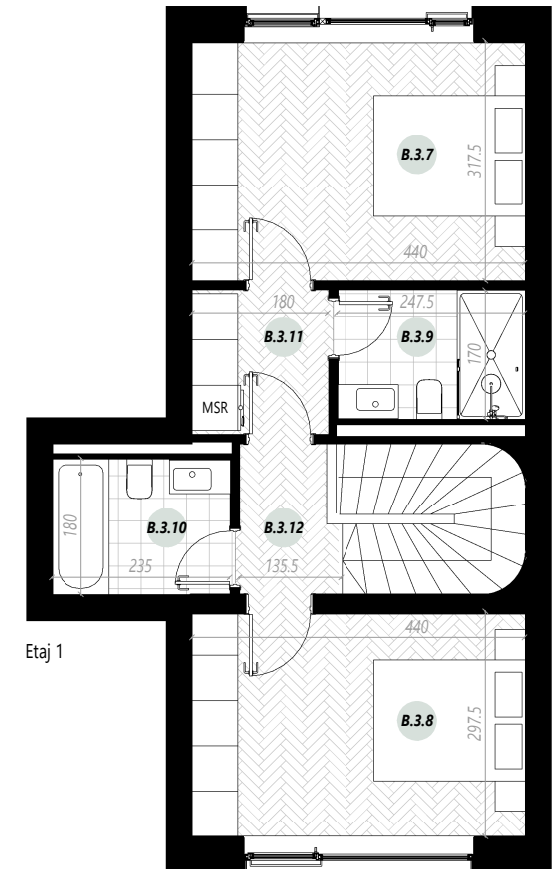


| SUPRAFETE UTILE APARTAMENT B3 |

| | | |
|--------|--------------------|---------------------|
| B.3.1 | Hol Intrare | 7.1 m ² |
| B.3.2 | Scara | 2.4 m ² |
| B.3.3 | Depozitare | 2.4 m ² |
| B.3.4 | G.S. | 2.1 m ² |
| B.3.5 | Living | 18.4 m ² |
| B.3.6 | Bucatarie + Dining | 14.1 m ² |
| B.3.7 | Dormitor | 13.9 m ² |
| B.3.8 | Dormitor | 13 m ² |
| B.3.9 | Baie | 4.2 m ² |
| B.3.10 | Baie | 4.2 m ² |
| B.3.11 | Dressing | 3.4 m ² |
| B.3.12 | Hol | 2.4 m ² |
| B.3.13 | Birou | 5.3 m ² |
| B.3 | | 93 m ² |



Parter



Etaj 1