

Apartment B.2

2 Camere +

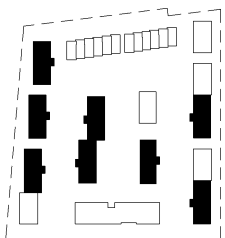
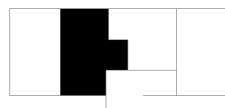
Parter / Imobil P + 3

S utila incalzita : 69.2 m²

S construita locuinta : 82.7 m²

S curte din fata: 15.6 m²

S curte privata : de la 31.2 m² la 45.6 m²



SUPRAFETE UTILE APARTAMENT B2

B.2.1	Hol Intrare	3.2 m ²
B.2.2	Living	22.8 m ²
B.2.3	Bucatarie + Dining	17.7 m ²
B.2.4	Baie	4.7 m ²
B.2.5	Birou	7.4 m ²
B.2.6	Dormitor	13.4 m ²
B.2		69.2 m ²

